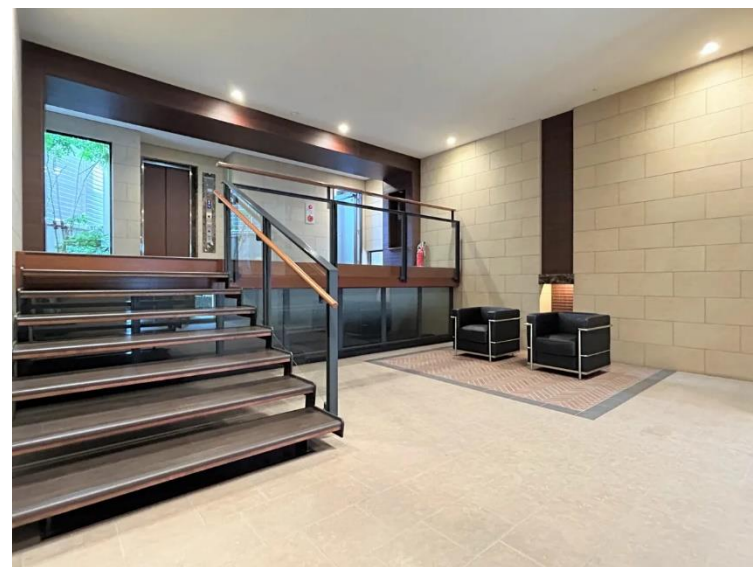
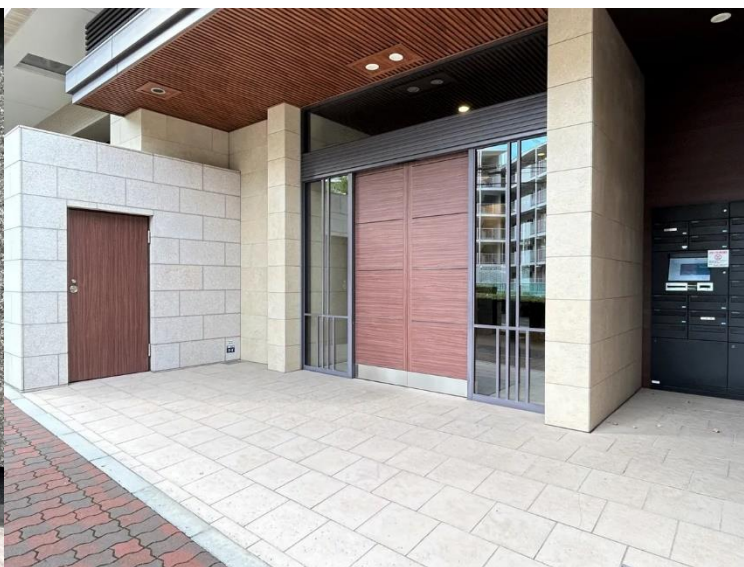




Luxury Apartment in Kobe WAKOHRE ROKKO PREMIUM

Mash Co., Ltd.
3-11, Fujishirodai 2chome, Suita City, Osaka Prefecture
Osaka Prefecture Governor License (2) No. 58189
Main Line (Japanese): 0663697347
English and Chinese Service Hotline : 09098794615

Property Information



Address:

2-7-3 Yawatacho, Nada Ward, Kobe City, Hyogo Prefecture

Completion Date: April 2017

Structure: Reinforced Concrete

Total Units: 21 units

Floor/Total Floors:

1st Floor / 5 Floors Above Ground

Exclusive Area: 80.03m²

Construction Company:

Murakami Construction Co., Ltd.

Management Company:

Global Community Co., Ltd.

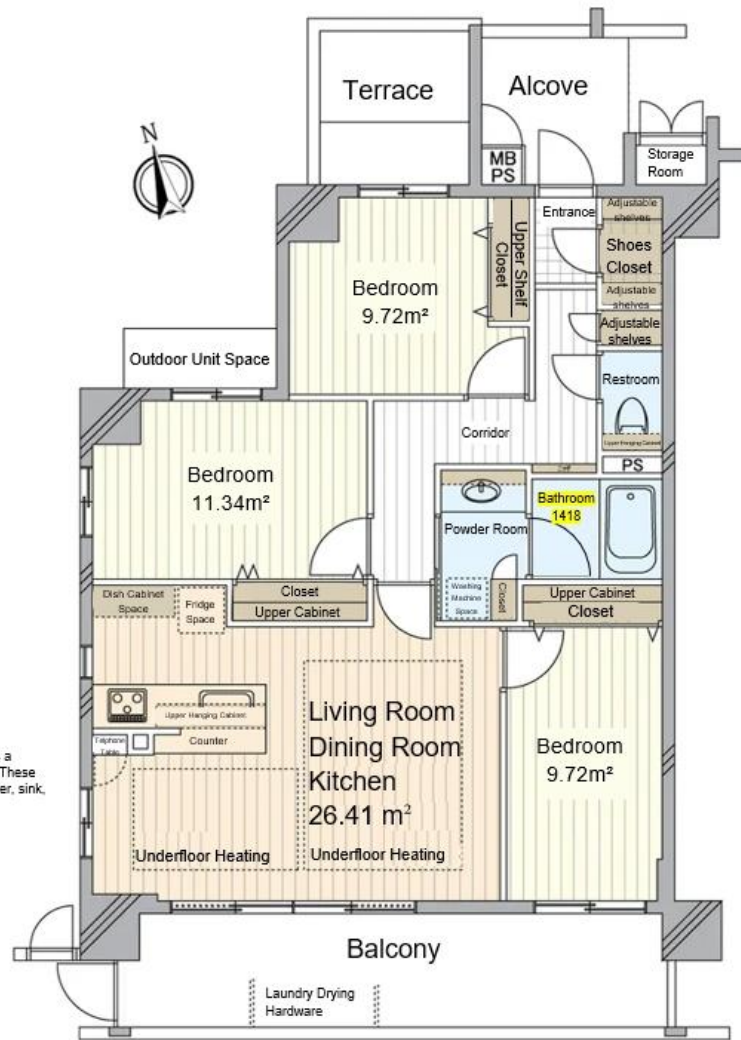
Management Style: Fully Outsourced

Land Rights: Freehold

Access:

- 3-minute walk to Hankyu Kobe Line Rokko Station
- 7-minute walk to JR Tokaido Main Line (Maibara-Kobe) Rokkomichi Station
- 13-minute walk to Hanshin Main Line Shinzaike Station

Room Plan



Bathroom 1418
The Japanese real estate term "bathroom 1418" describes a prefabricated bathroom unit measuring 1.4 by 1.8 meters. These compact, watertight units typically include a bathtub, shower, sink, designed for efficient use of space and easy cleaning.

Price: ¥69,800,000 yen

Layout: 3LDK (3 bedrooms + living/dining/kitchen)

Main Orientation: South

Balcony Area: 13.86m²

Management Fee: ¥8,400/month

Repair Reserve Fund: ¥16,010/month

Parking: Available

Current Status: Vacant

Closing: Negotiable

School District:

- Approximately 6-minute walk to Rokko Elementary School

- Approximately 23-minute walk to Nagamine Junior High School

Room Photos

